

HOARDING & SCREENING INNOVATIONS



 **Plasko**

Hoarding & Screening Australia

100% RECYCLABLE HOARDING

INTERNAL AND EXTERNAL
HOARDINGS FAST FIT,
FREESTANDING AND
FULLY-ENGINEERED

EXPLORE

- About Plasloc**
 - About Plasloc Australia 05
 - The Company 07
- Internal Systems**
 - Panel Walls 09
 - Stackable Ballast 09
 - Baseplates 09
- Interactive Product Guide**
 - Construction Elevation Inner 10
 - Construction Elevation Outer 12
- Photo Gallery . Retail**
 - Client Projects 15
- Photo Gallery . Airports**
 - Client Projects 19
- Photo Gallery . Construction**
 - Client Projects 23
- Photo Gallery . Medical**
 - Client Projects 27
- Photo Gallery . Office Fit Out**
 - Client Projects 31



Welcome to Plasloc •



About Plasloc Australia

Plasloc Australia was launched after recognising the gap in the Australian market for clean, environmentally-friendly hoarding and screens. Many temporary wall systems currently used in the construction and refurbishment industry are made from ICP or timber-based products and are imported from across the globe. After a few uses (or even a single use), the typically-used materials are transported and disposed of through landfill as they are incredibly difficult to recycle as they are no longer in a acceptable condition for re-use. Following large success in the UK, Plasloc now aims to help Australian organisations reuse and reduce Australian waste.

Our Environmental Achievements

Plasloc is a recycled plastic cellular, interlocking hoarding system. Over a 5 year period, Plasloc fitted 88,000 linear meters, saving 3,471 metric tonnes of timber going to landfill at a cost of £297,680. It is manufactured in a closed-loop system using recycled UPVC-U plastic that generates 120kg of CO₂, reducing carbon emissions by 90%. The locking system means assembly requires no nails, drilling or cutting, limiting board damage and improving life expectancy. End of life is granulation and recycling into the next generation of Plasloc. In an independent carbon assessment plan, the external system saved equivalent to 41.6 tonnes of CO₂ through recycling and reuse.



Our Company Vision •



Our Systems

The Plasloc system uses innovative technology which incorporates the science of the traditional tongue and groove joint but with the unique benefit of a compression lock. This prevents two panels becoming separated without the application of significant physical force. Plasloc systems are installed by our trained and qualified fitters to ensure we uphold our reputation of quality and safety.

Our Values

Plasloc is a forward-thinking company that believes in, and is committed to, continually investing in and developing the Plasloc product range and its supporting systems and services to ensure we provide customers with a great service. It's never been a more exciting time as the company focuses on achieving its mission to be the 'specifiers' partitioning system of choice.

It's never been a more exciting time as the company focuses on achieving its mission to be the 'specifiers' partitioning system of choice.

Plasloc's fundamental ethos is to listen to customers, understand their requirements and innovate products, systems and services that reduce environmental impact and help our customers meet their sustainability commitments and obligations.

PLASLOC IS A PATENTED CELLULAR PLASTIC INDOOR AND OUTDOOR PARTITIONING SYSTEM, INSTALLED BY OUR TEAM OF SPECIALIST INSTALLERS AND HIRED TO OUR CLIENTS.



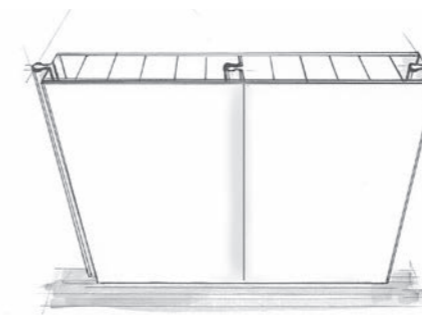


Internal & External Systems •



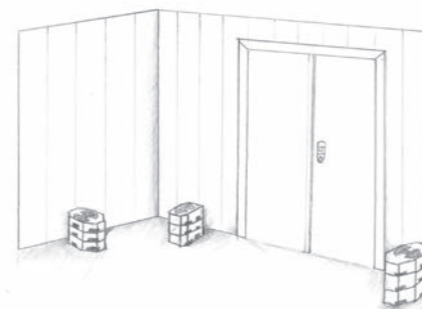
- AVIATION
- CONSTRUCTION
- MEDICAL
- FITOUT & RETAIL

FAST FIT, FREESTANDING
& ENVIRONMENTALLY
SOUND INTERNAL &
EXTERNAL HOARDINGS



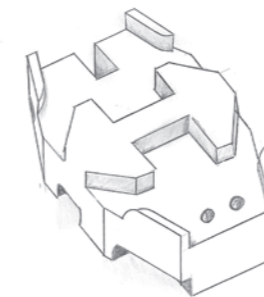
Joined Panels

The interior hoarding system is designed to be self-supporting. The system is a perfect solution where specifications define restrictions to fixings to walls, floors or ceilings. Typical applications include the safe segregation of building and refurbishment works from passengers in airport and rail environments and customers in government buildings, hospitals and the hospitality sector.



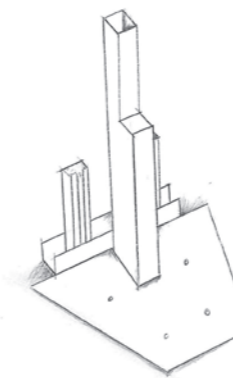
Panel Walls

The interior panel wall system is finished in white and presents a clean, smooth finish, which can be successfully clad in vinyl or foamex graphics. A Plasloc Single or Double access door can be supplied with a host of accessories to meet every requirement, including vision panels and emergency escape controls. The system is also appropriate for complete room construction.



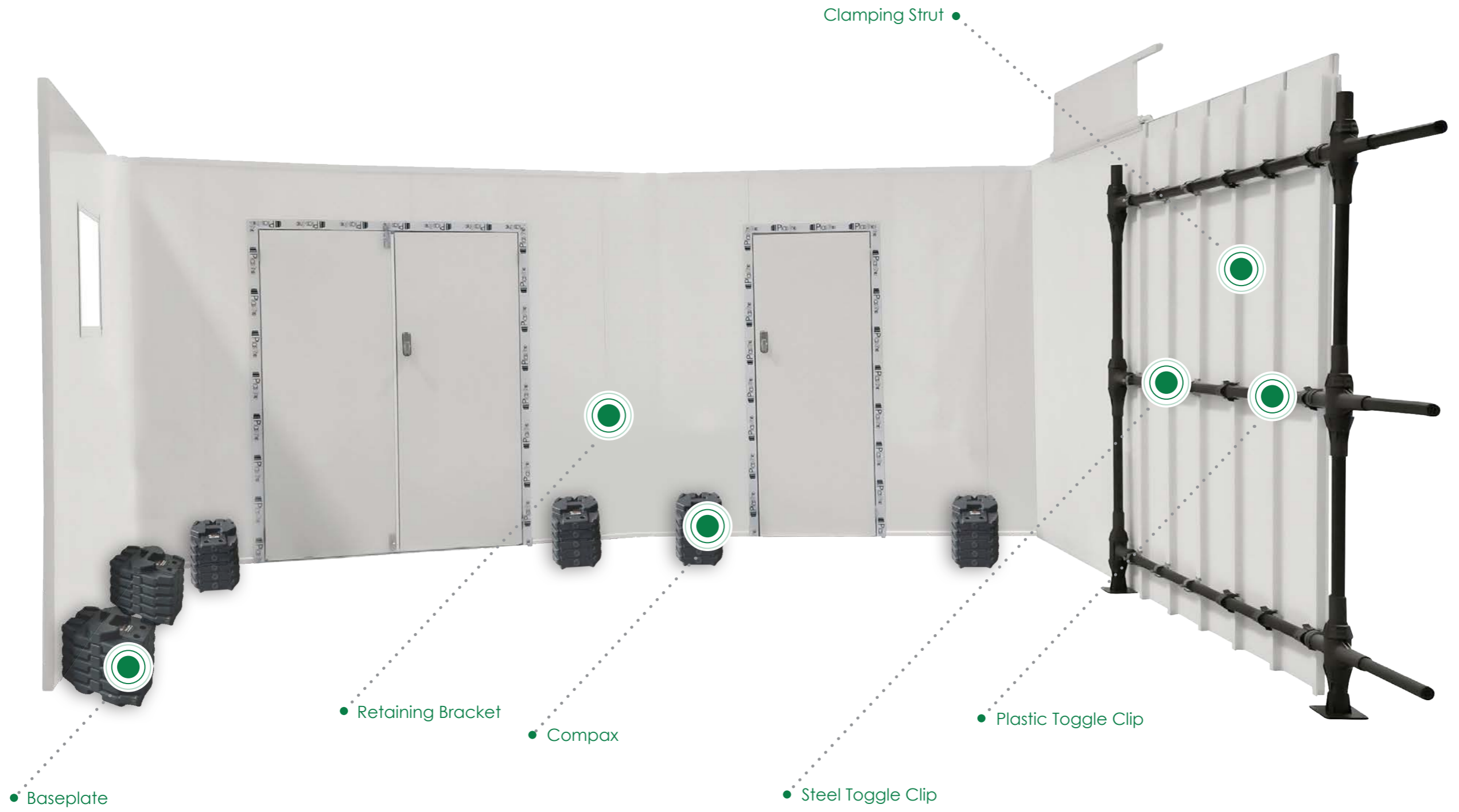
Stackable Ballast

Bespoke stackable ballast anchor, filled with concrete sits upon the baseplates, which are integrated to the wall panels collectively, providing the structural integrity to the system. The stackable ballast occupy very little space allowing maximum use of the segregated area whilst also providing a structurally certified solution.

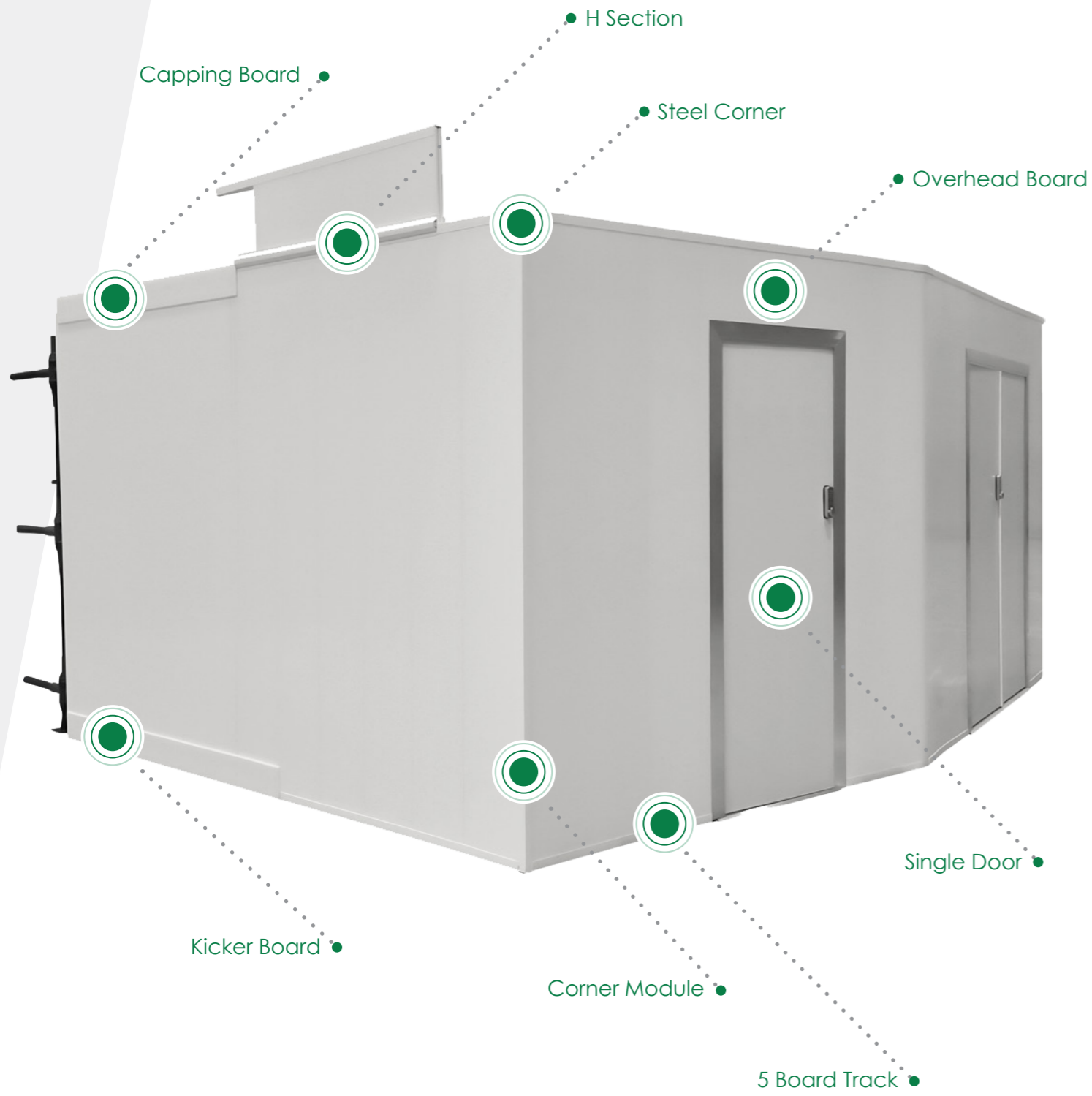


Baseplates

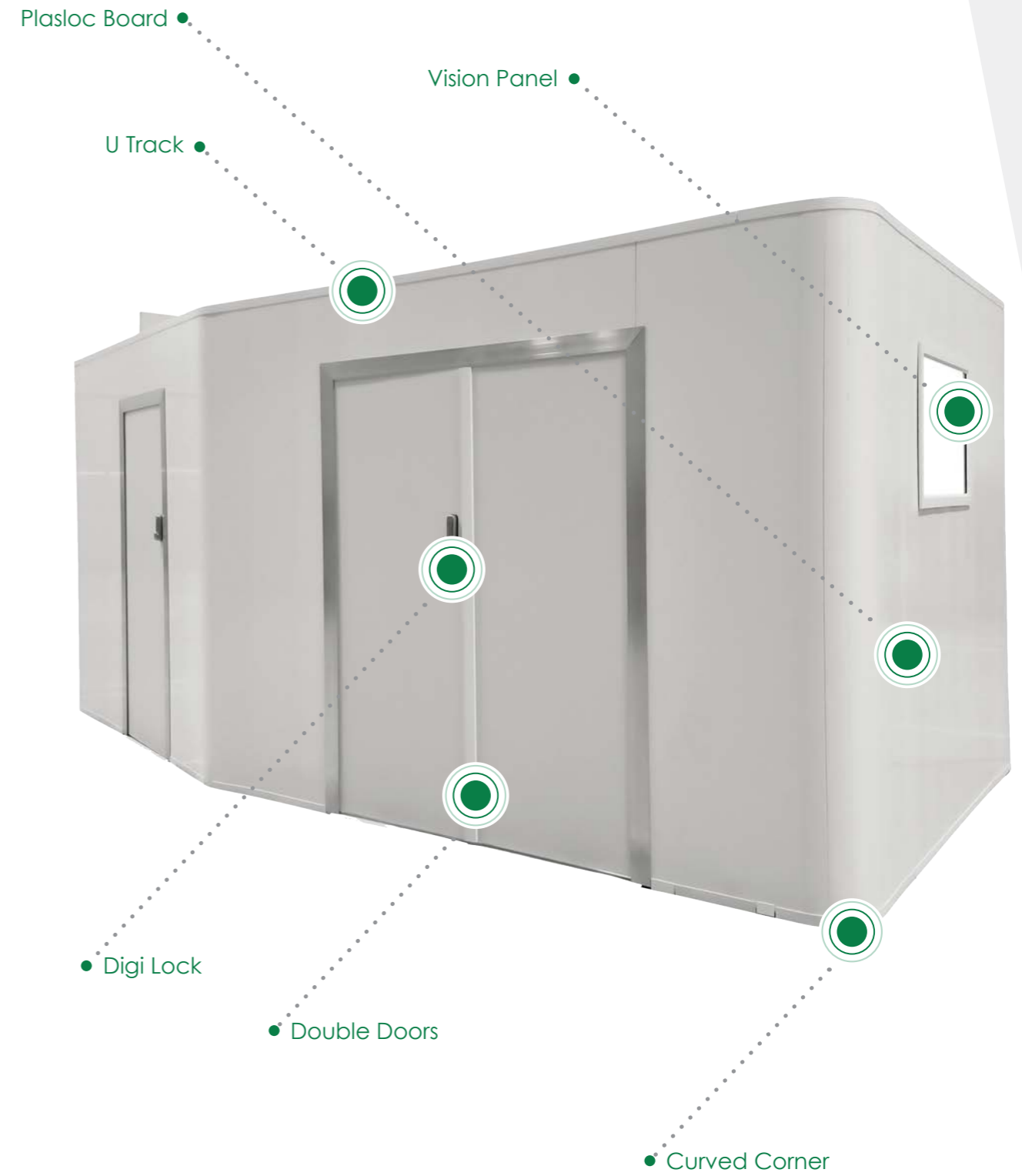
Designed as a prefabricated welded platform with upright powder coated steel channels onto which the wall panels are fitted. The ballast filled anchor containers are then fitted onto these baseplates to provide the counterweight and prevent the wall panels from overturning. Our certification and warranty permit the adaption or removal of these baseplates only by approved Plasloc fitters.



Client Elevation . Left Side



Client Elevation . Right Side

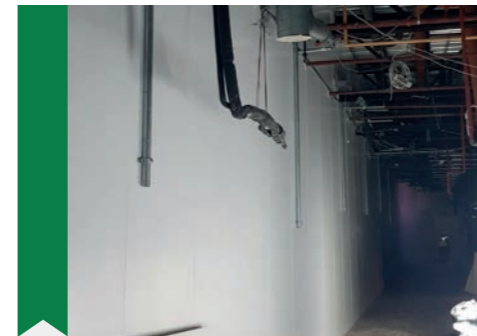


STANDARD SYSTEMS:
 INTERNAL PART-HEIGHT FREESTANDING
 INTERNAL FULL-HEIGHT FREESTANDING
 (FLOOR TO CEILING)
 EXTERNAL FREESTANDING

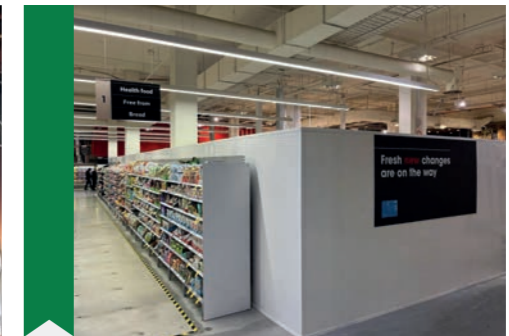
BESPOKE SYSTEMS:
 TEMPORARY EXTERNAL WALLS
 TEMPORARY ACCESS TUNNELS
 TEMPORARY INTERNAL WALLS
 FIRE RATED COMPOSITES
 UP TO 12M IN HEIGHT



Photo Gallery . Retail •



Project - WMS Extension
 Hoarding Systems - 1hr Fire rated composite



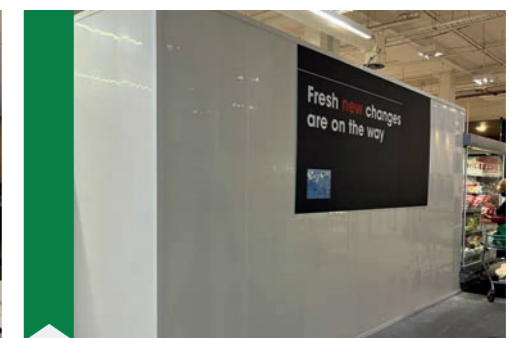
Project - Supermarket
 Hoarding Systems - 1hr Fire rated composite



Project - SSL Extension
 Hoarding Systems - External



Project - Cashier refresh
 Hoarding Systems - Internal



Project - Supermarket
 Hoarding Systems - Internal

QUOTE " A nice email to start the day... I would like to pass on my thanks to your two operatives on site last night at Water Lane. If everyone was that efficient, tidy and helpful it would make the world of construction a lot easier. "

Ryan Wilks – RG Group



Project - Store refresh
Hoarding Systems - External



Project - Store refresh
Hoarding Systems - Internal



Project - New furniture franchise
Hoarding Systems - Internal



Project - McDonalds refit
Hoarding Systems - Internal



Project - New Furniture franchise
Hoarding Systems - Internal



Project - WMS Extension
Hoarding Systems - Demo wall



Project - Supermarket
Hoarding Systems - Scaffold based Internal

QUOTE " Morrisons Monthly contractors meeting it was noted by morrisons how impressed they were with the quality of Plasloc External hoarding and indicated this is what they want to see rolled out across all there contracts. "
- Terry Heath – ISG Construction



Project - WMS Extension
Hoarding Systems - Demo wall



Project - WMS Extension
Hoarding Systems - 1hr Fire rated composite



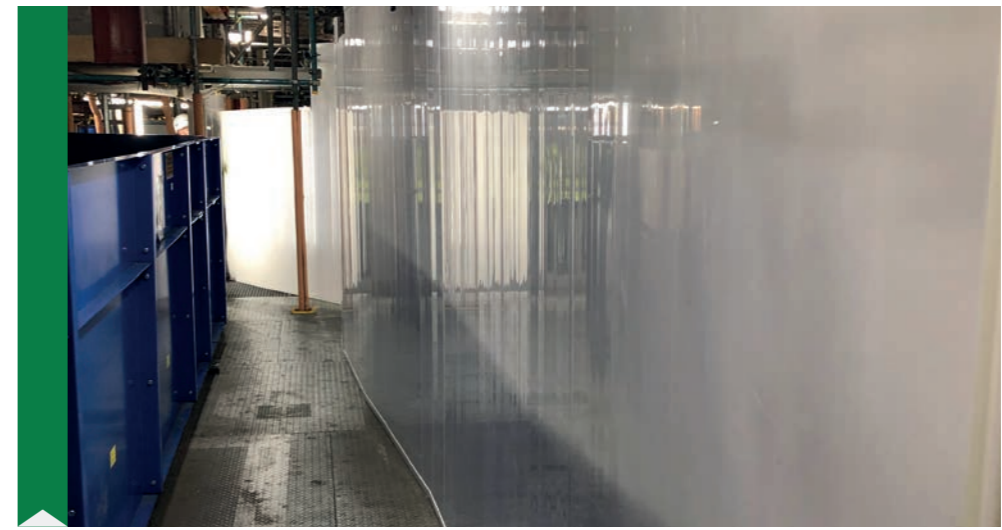
Photo Gallery . Airports •



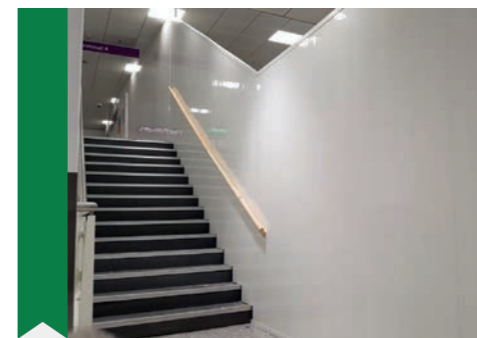
Project - Ceiling replacement
Hoarding Systems - Internal



Project - CTA Walkway
Hoarding Systems - Internal



Project - Baggage reclaim
Hoarding Systems - Internal



Project - Travellator replacement
Hoarding Systems - Internal



Project - Airside storage facility
Hoarding Systems - Plasblok

QUOTE "We are more than happy with the installations yesterday and much appreciate the fast turnaround, we will most definitely pass our future work your way going forward."

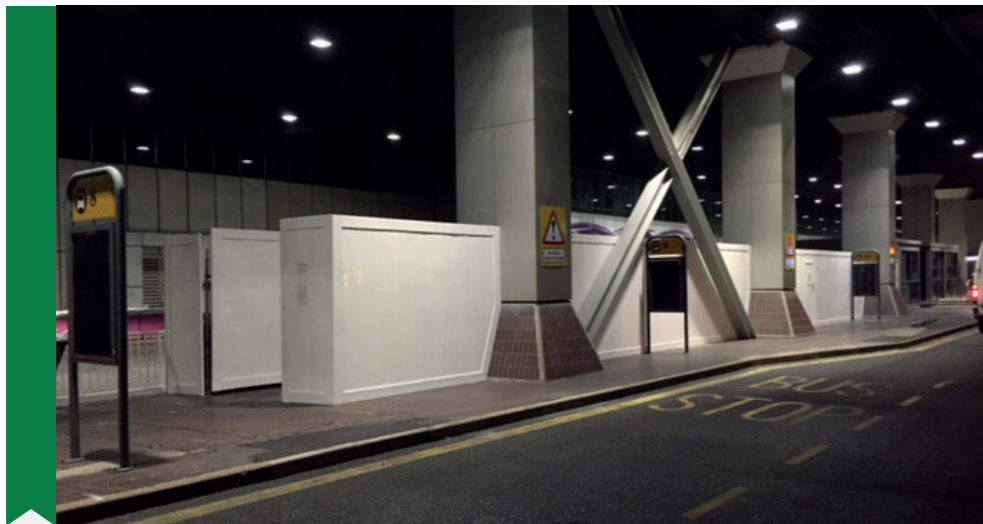
Kris Redshaw - Projects Director One Commercial



Project - Victor Pier PAXCON
Hoarding Systems - Internal



Project - Costa coffee
Hoarding Systems - Internal



Project - LV
Hoarding Systems - External



Project - Ceiling replacement
Hoarding Systems - Internal



Project - LUL
Hoarding Systems - Scaffold based internal

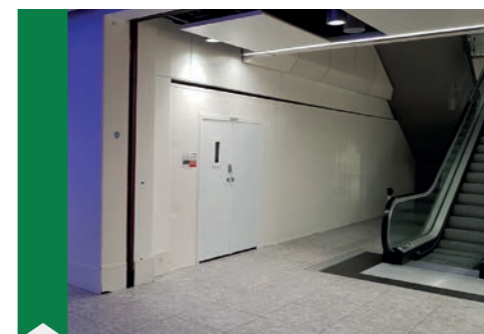


Project - Passenger transfer
Hoarding Systems - Internal

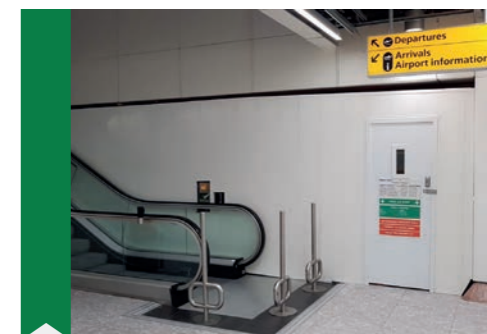


Project - BAA Staff lounge
Hoarding Systems - Internal

QUOTE " Thanks for all your help on this project, things wouldnt have gone so smoothly without your assistance. " - Anthony Valentine - 8 point 8



Project - Victor Pier PAXCON
Hoarding Systems - Internal



Project - Ceiling replacement
Hoarding Systems - Internal



Photo Gallery . Construction •



Project - Dyson R&D extension
Hoarding Systems - Demowall



Project - Dyson R&D extension
Hoarding Systems - Demowall – Firefly



Project - White City Living, apartments
Hoarding Systems - External



Project - Building demolition
Hoarding Systems - External



Project - Building refurbishment
Hoarding Systems - External/ Anti climb

QUOTE "Thank you for all the support you have given us during the project. all the feedback has been amazing, I even had people say how professional and efficient your guys were."

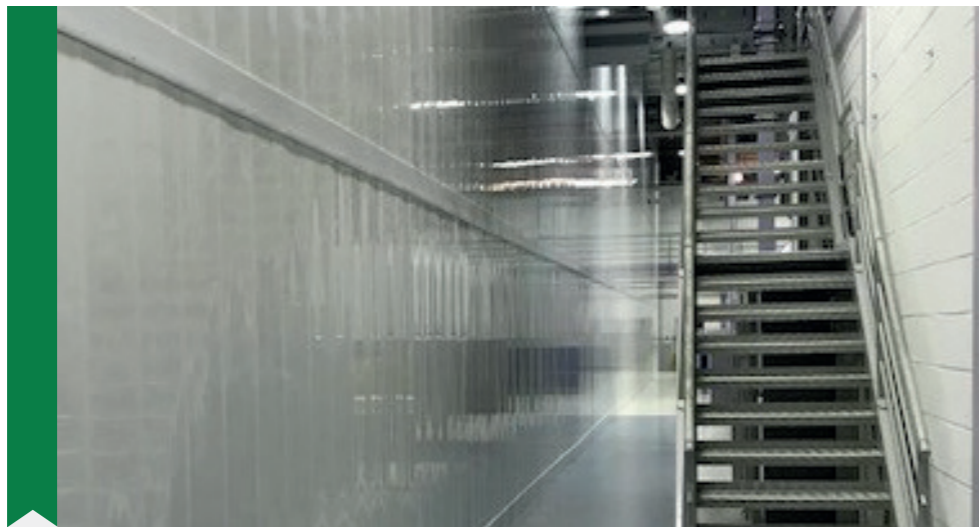
Derek Waite - IKEA



Project - Ceiling works
Hoarding Systems - Plasklad



Project - Store demolition
Hoarding Systems - Demo wall



Project - Restaurant refit
Hoarding Systems - External



Project - Restaurant extension
Hoarding Systems - External



Project - Store refit
Hoarding Systems - Demowall/ Roof

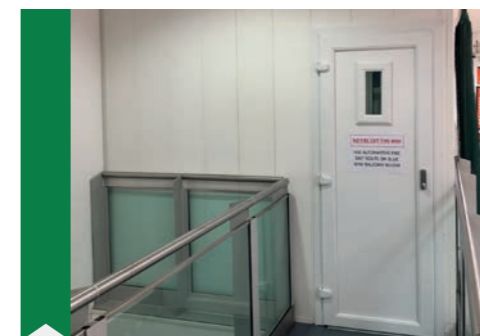


Project - Exterior cladding
Hoarding Systems - External



Project - Student accommodation
Hoarding Systems - External/ Debris netting

QUOTE " Site walk around yesterday the client and architect commented on how good the hoarding looked, to the point they wanted to know why after 10 years of us working at Redbull why we haven't used Plasloc before. " - Simon Whittaker - SDC



Project - Sports hall demolition
Hoarding Systems - Internal



Project - Manufacturing line segregation
Hoarding Systems - Bespoke internal system / Sliding door



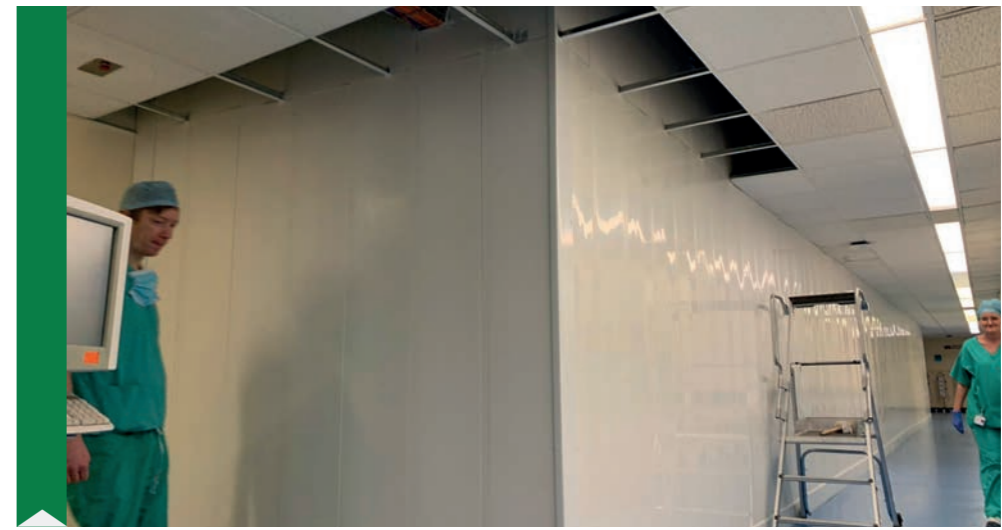
Photo Gallery . Medical •



Project - Evelina
Hoarding Systems - External



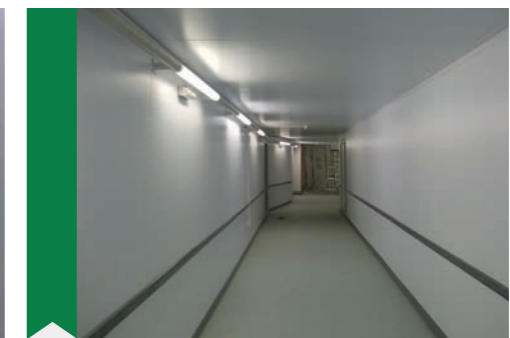
Project - A&E
Hoarding Systems - Internal



Project - Maternity unit
Hoarding Systems - External



Project - Snow Leopard
Hoarding Systems - Demowall Tunnel



Project - GOSH Extension
Hoarding Systems - Fire rated composite tunnel

QUOTE " Another first class service from the Plasloc team, I know when I call Plasloc in there will be no issues from initial order, recieveing temporary works design to installation everything runs seamlessly. "

Radek Zielonka – Logan Construction



Project - A&E refresh
Hoarding Systems - Internal



Project - Level 6
Hoarding Systems - Internal



Project - Oncology
Hoarding Systems - Internal



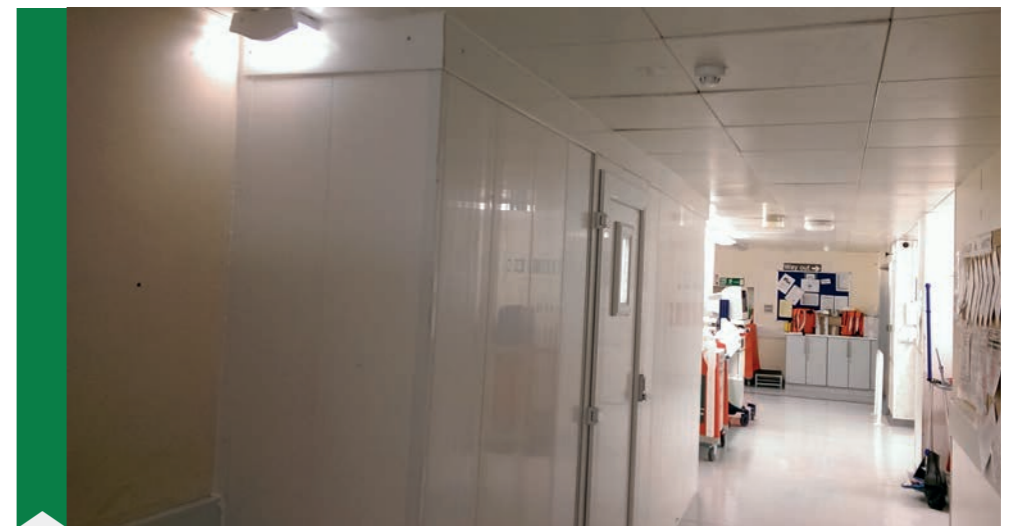
Project - Royal Birth of Prince George, Paparazzi screening
Hoarding Systems - Internal



Project - Sleep Labs
Hoarding Systems - Internal



Project - Lab refurbishment
Hoarding Systems - Internal



Project - A&E
Hoarding Systems - Internal

QUOTE " Please thank your fitters who attended site this weekend, the screens and tunnel installed in Torbay Hospital went in well and look great. " - Paul Purser – Kier



Project - Lab refurbishment
Hoarding Systems - Internal



Project - Central decontamination unit
Hoarding Systems - Demo wall



Photo Gallery . Office Fit Out •



Project - 234 Bath road Fit out
Hoarding Systems - Internal & Foamex Graphics



Project - Flooring replacement
Hoarding Systems - Internal



Project - Café refit
Hoarding Systems - Internal



Project - Lift refurbishment
Hoarding Systems - Internal



Project - Office refurbishment
#Hoarding Systems - Plasklad

QUOTE "Plasloc always arrive when requested, H&S always in order including operatives PPE, great product and innovation. I wouldn't go anywhere else."

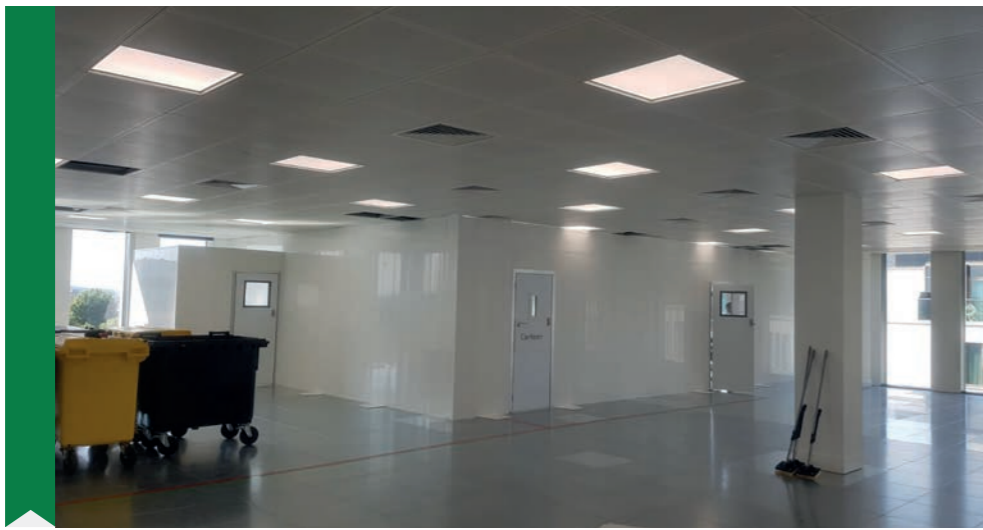
James Sherlock – Parkeray



Project - Office refurb, Site set up
Hoarding Systems - Internal



Project - Office refurb, Site set up
Hoarding Systems - Internal



Project - Office refurbishment, Site set up
Hoarding Systems - Internal



Project - Office refurbishment
Hoarding Systems - External



Project - Office refurb, Site set up
Hoarding Systems - Internal

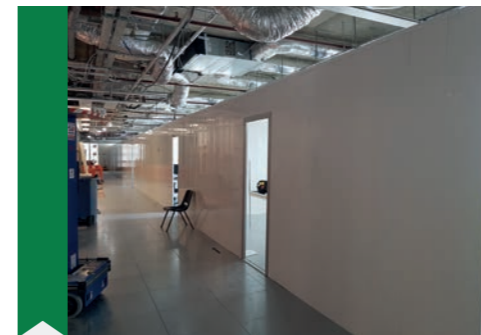


Project - Office refurb, Site set up
Hoarding Systems - Internal

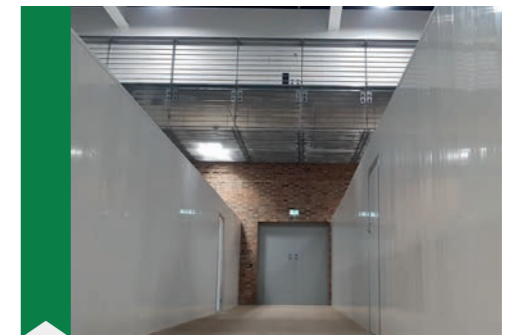


Project - Office refurbishment, Site set up
Hoarding Systems - Internal

QUOTE " Really impressed with the Plasloc system; good quality, quick installation, their guys were helpful - and they have a quick turnaround time, furthermore they were able to do some value engineering. " - Abigail Ellis – Morgan Lovell



Project - Office refurb, Site set up
Hoarding Systems - Internal



Project - Office refurb, façade works
Hoarding Systems - Demo wall



Hoarding & Screening Australia

T: 0421957712

E: info@plasloc.com.au

W: www.plasloc.com

Plasloc Australia PTY LTD . 5/ 26-30 . HOWLEYS RD . NOTTING HILL . MELBOURNE VIC 3168 AUSTRALIA

Produced by: www.q-ballmedia.co.uk